

**The Legacy of Tadao Ando's Architecture**  
**Tokyo – Matsuyama – Naoshima – Kyoto – Osaka**  
**(13 nights 14 days)**

**Designed for Your Clients**

A self-taught and pioneering architect, Tadao Ando has been a figurehead of Japanese contemporary architecture in Japan and the rest of the world for over four decades, culminating with a Pritzker Prize of Architecture in 1995.

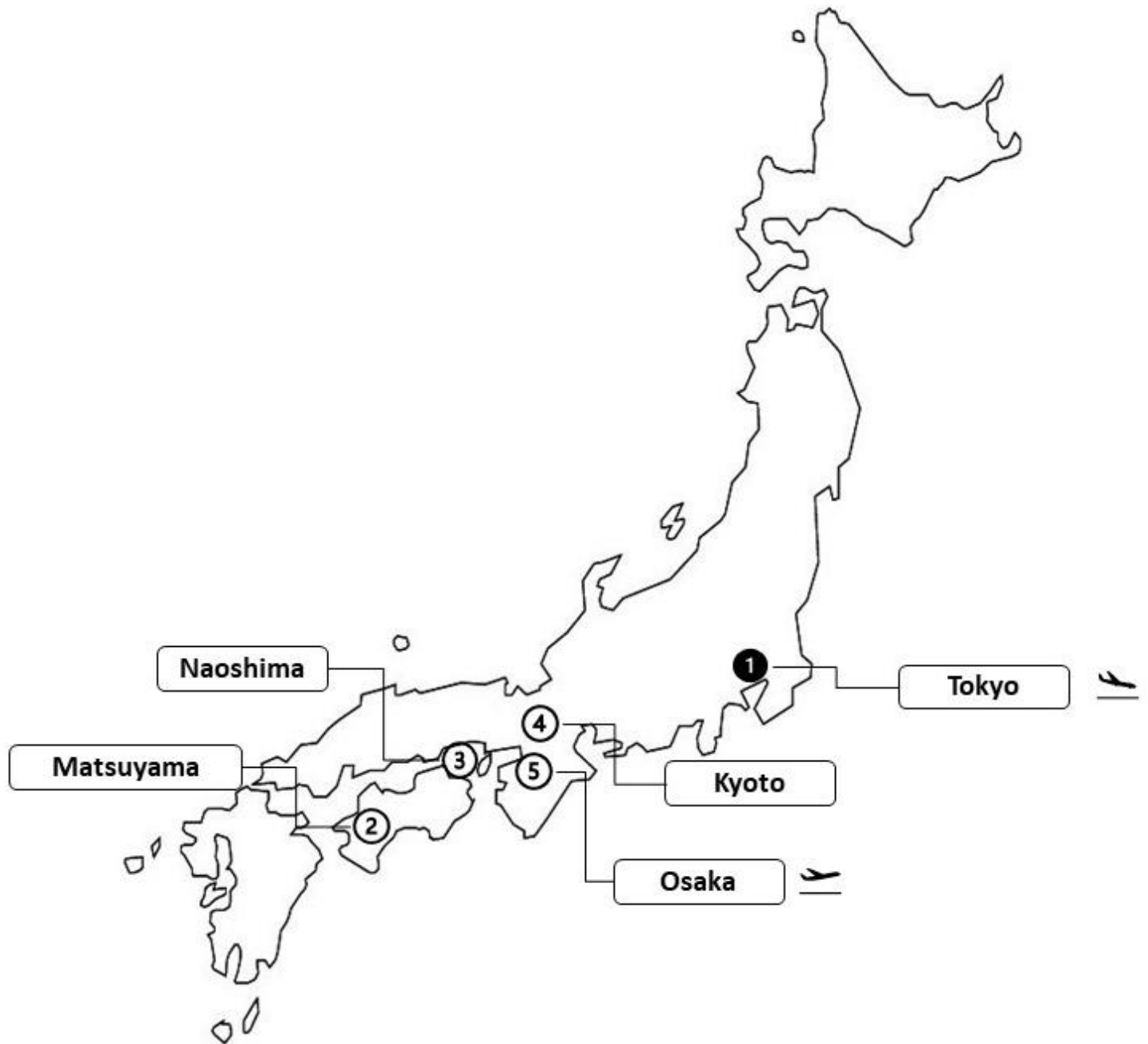
Discover the enduring work of this prolific architect, ranging from museums & libraries to community centres, temples and churches. This fully customizable journey will take you throughout the country, from large cities to remote islands, with a fine balance between ancient & new architectural sites, contemporary arts in eye-pleasing landscapes and urban sightseeing, while staying at the best accommodation Japan has to offer.



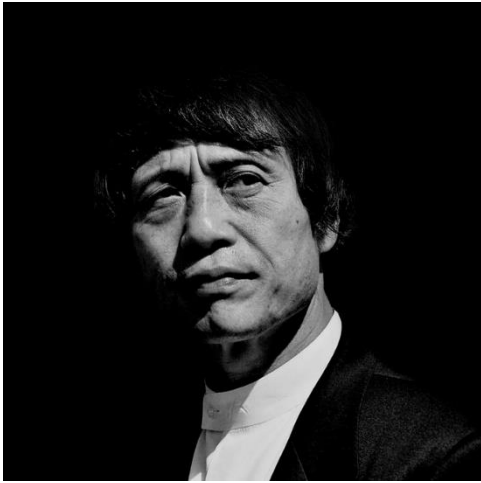
### Itinerary at a Glance

Date	Program	Accommodation
Day - 1	Arrival in HND/NRT	Mandarin Oriental Tokyo
Day - 2	Tokyo	Mandarin Oriental Tokyo
Day - 3	Tokyo	Mandarin Oriental Tokyo
Day - 4	Move to Matsuyama	Setouchi Retreat Aonagi
Day - 5	Matsuyama	Setouchi Retreat Aonagi
Day - 6	Move to Naoshima via Takamatsu	Benesse House
Day - 7	Naoshima	Benesse House
Day - 8	Move to Kyoto	The Ritz-Carlton, Kyoto
Day - 9	Kyoto	The Ritz-Carlton, Kyoto
Day - 10	Kyoto	The Ritz-Carlton, Kyoto
Day - 11	Move to Osaka	The Ritz-Carlton, Osaka
Day - 12	Osaka	The Ritz-Carlton, Osaka
Day - 13	Day Trip to Kobe & Awajishima	The Ritz-Carlton, Osaka
Day - 14	Departure from NRT	N/A

Your Travel Map



## Who is Tadao Ando?

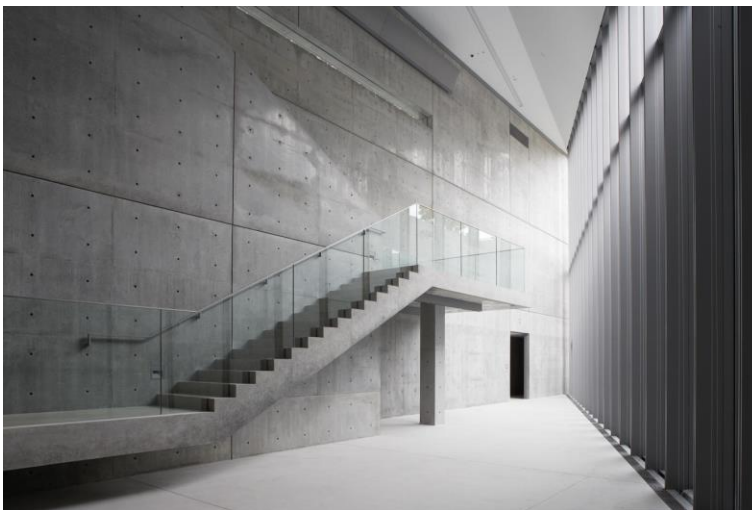


Tadao Ando is a self-taught architect born in 1941 in Osaka, Japan, whose approach to architecture and landscape was categorized by architectural historian Francesco Dal Co as "critical regionalism". Notable awards include the Gold Medal of Architecture, Academie d'Architecture (1989); **The Pritzker Architecture Prize (1995)**; Gold Medal of the American Institute of Architects (2002), and Gold Medal of Union Internationale des Architectes (2005). Ando is an honorary member of the American Institute of Architects, the American Academy of Arts and Letters, as well as the Royal Academy of Arts in London.

## Characteristics of his architectures

Characteristics of his work include **large expanses of unadorned architectural concrete walls** combined with wooden or stone floors and large windows. **Active natural elements**, like sun, rain, and wind are a distinctive inclusion to his style.

He has explained his method by saying: "When I design buildings, I think of the overall composition, much as the parts of a body would fit together. On top of that, I think about how people will approach the building and experience that space... If you give people nothingness, they can ponder what can be achieved from that nothingness."



## List of the architectures designed by Tadao Ando

Date	Destination	Name of the architecture / place
Day – 2	Tokyo	International Library of Children's Literature, National Diet Library
Day – 3		Tokyo Art Museum
		Shibuya Station
		21_21 DESIGN SIGHT
Day – 5	Matsuyama	Saka no Ue no Kumo Museum
		Nangakuzan Komyo–ji Temple
Day – 6	Takamatsu	Open Air Museum of Shikoku–mura
Day – 7	Naoshima	Chichu Museum
		Lee Ufan Museum
		ANDO MUSEUM
		Art House Project (Minamidera)
Day – 8	Okayama	Nariwa Museum
		Okayama Shinkin Bank Uchisange Square
Day – 9	Kyoto	Garden of Fine Art
		The Times / NIWAKA Fine Jewelry building
Day – 10		Mitsumasa Anno Art Museum
		The Ayabe Community Center
Day – 11	Osaka	Asahi Beer Oyamazaki Villa Museum of Art
		Shiba Ryotaro Memorial Museum Memorial
		Nakanoshima Children's Book Forest
		Shinsakuramiya Bridge / Naniwabashi Station
		Chaska Chayamachi
Day – 12		Chikatsuasuka Museum
		Osaka Prefectural Sayamaike Museum
		Osaka Culturarium at Tempozan
Day – 13	Hyogo	Water Temple
		The Awaji Yumebutai
		Hyogo Prefectural Museum of Art
		Nishinomiya City Shellfish Museum

## Detailed itinerary

### Day – 1, Arrival in Narita/Haneda International Airport

After arriving at **Narita/Haneda International Airport** and completing immigration formalities, you will be greeted by your **English Speaking Chauffeur** at the arrival hall and transfer by Private Chartered Car to the hotel.



### Mandarin Oriental Tokyo



Upon arrival at Mandarin Oriental Tokyo, you will be overwhelmed by the dramatic first impression. The extraordinary lobby surrounded by glass and the futuristic luxury of the interiors illustrates the hotel's defining style; extreme comfort whilst reflecting Japan's characteristics.

### **Overnight at Mandarin Oriental Tokyo**



## Day - 2, Tokyo

At **10:00**, meet with your **English Speaking Guide** in the hotel lobby and leave for Tokyo excursion by Private Chartered Car.

Your guide will show you the small streets of **Asakusa**, one of Tokyo oldest and well preserved districts where you can still feel the presence of Ancient Japan.



Walk along the **Nakamise dori-street**, dating back to the Edo period when the temple's neighbours were given special right to open their shops in the approach to the temple and arrive at the **Sensoji Temple**, with its huge lantern.

Transfer to **International Library of Children's Literature, National Diet Library** – which is a national library dedicated to children's books, which provides internationally linked library services for children's literature published in Japan and abroad. The main building, designated as a historic building by the Tokyo Metropolitan Government, was constructed in 1906 and expanded in 1929. In Tadao Ando's design and structure of the new addition to the Library, the interior and exterior of the valuable architectural heritage has been preserved as much as possible.



You will then transfer to **Nezu / Yanaka district** where you can feel the olden time's Tokyo town. It's pleasant to stroll among temples and wooden houses surrounded by wild grasses.



Come back to the hotel by **16:00**.

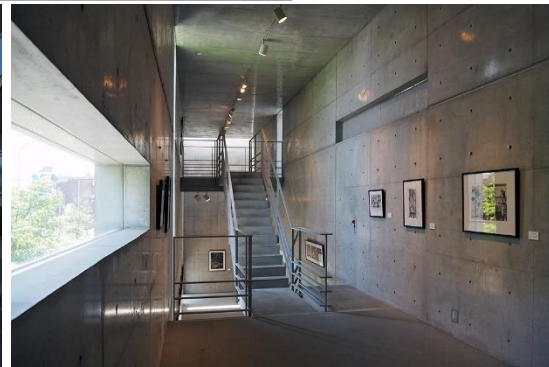
**Overnight at Mandarin Oriental Tokyo**



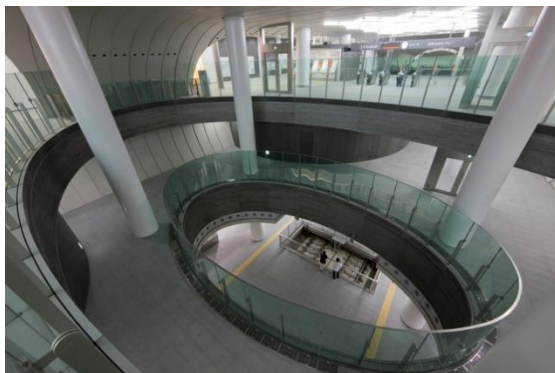
### Day - 3, Tokyo

At **10:00**, meet with your **English Speaking Guide** in the hotel lobby and leave for Tokyo excursion by Private Chartered Car.

Firstly, transfer to **Tokyo Art Museum**. This museum of fine arts, design and architecture opened in 2004 as part of an urban planning project in Sengawa. The area, about a five-minute walk from the station, is known as '**Sengawa Ando Street**' and has several buildings designed by Tadao Ando.



Move on to Shibuya and take a look at **Shibuya Station** which was designed by Tadao Ando. It's design, in not surprising Tokyo cool, is egg shaped and intentionally designed to look like a spaceship. Then, continue to Omotesando, **Omotesando Hills** was also designed by Tadao Ando.



Transfer to Roppongi area and visit **21\_21 DESIGN SIGHT** which was born as a venue to redirect our eyes to everyday things and events, and create various proposals and communicate numerous discoveries from the design point of view. As a place where visitors can be exposed to the pleasures of design and have new experiences filled with surprises, 21\_21 DESIGN SIGHT focuses on exhibitions and runs a diversified program that includes talks and workshops.



Come back to the hotel by 16:00.

**Overnight at Mandarin Oriental Tokyo**

### Day – 4, Move to Matsuyama

Check-out the hotel at X:XX and meet with **English Speaking Chauffeur** and transfer to **Haneda Airport** in by Private Chartered Vehicle. Catch a domestic flight to Matsuyama.

#### **[Suggested Domestic flight Schedule]**

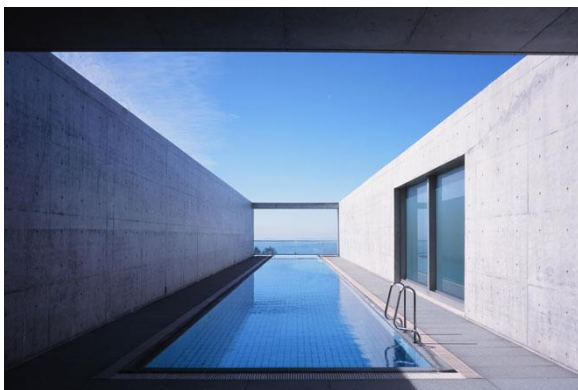
NH XXX / Haneda X:XX – X:XX Matsuyama



Upon arrival at **Matsuyama Airport**, you will meet your **Japanese Speaking Chauffeur** and transfer by Private Chartered Car to the hotel.

### Setouchi Retreat Aonagi

Opened on 20<sup>th</sup> December 2015 after renovating a private holiday house owned by a Japanese company, it has been turned into a small luxury hotel for those who loves Ando Tadao's architecture. Offering a seasonal outdoor pool and views of the 'Setouchi Sea', Setouchi Retreat AONAGI is situated in Fujinono, 11 km from Matsuyama.



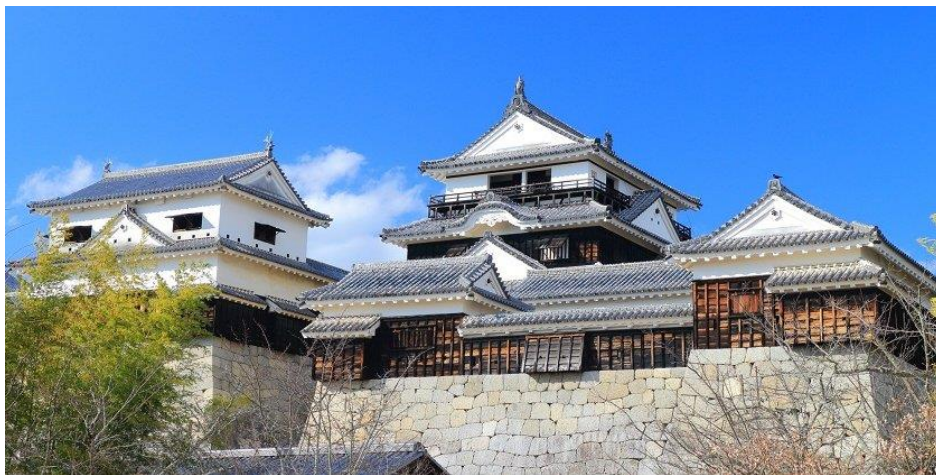
### **Overnight at Setouchi Retreat Aonagi**



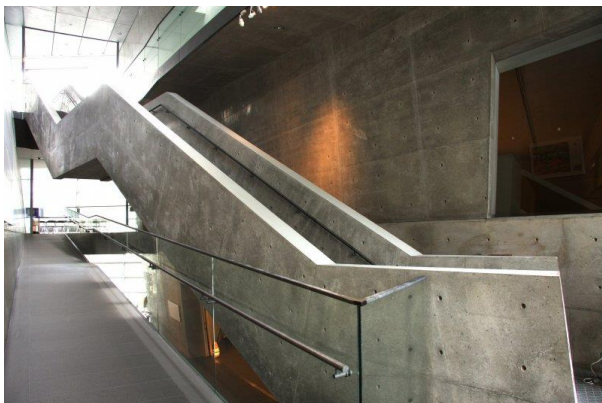
## Day – 5, Matsuyama

At **9:30**, meet your **English Speaking Guide** in the hotel lobby and leave for excursion by Private Chartered Car.

First, visit **Matsuyama Castle**, located on Mount Katsuyama, a steep hill in the city center that provides visitors with a bird's eye view of Matsuyama and the Seto Inland Sea. Constructed between 1602 and 1628, Matsuyama-jo is one of Japan's twelve "original castles", i.e. castles which have survived the post-feudal era since 1868 intact. It is also one of the most complex and interesting castles in the country.



Move on to **Saka no Ue no Kumo Museum** – “Clouds Above the Hill”, a historical novel by one of Japan’s leading novelists Ryōtarō Shiba, is partly set in Matsuyama, and the city has taken the novel as a theme in its development plans. This museum, designed by architect Tadao Andō, is a key part of this plan. Set in the Meiji period when Japan was emerging as a modern nation, the novel presents the lives of brothers Yoshifuru and Saneyuki Akiyama, and Shiki Masaoka, who all came from Matsuyama. The museum has exhibits about them and their historical background in the Meiji period. The novel was serialized in newspapers from 1968 to 1972, and was also made into a television drama.



In the afternoon, you will be transferred to **Nangakuzan Komyo-ji Temple** which is a modern temple designed by the world-class architect Tadao Andō. The Hondō main hall was newly built in 2000. It is surrounded by spring water called uchinuki, making the building appear as if it is floating on water. It is illuminated at night, creating a fantastical view of the hall. (\*\* the main hall is open only between 14:00 - 17:00)



Come back to the Hotel by **16:30**.

**Overnight at Setouchi Retreat Aonagi**



### Day – 6, Move to Naoshima via Takamatsu

At 9:00, check out the hotel and meet your **English Speaking Guide** in the hotel lobby, leave for excursion by Private Chartered Car.

Transfer to Takamatsu city (it takes about 3h by car) and take lunch, then visit **Open Air Museum of Shikoku-mura** where 33 village houses and ancient buildings have been reassembled from all over the Shikoku Island. The museum also includes an exhibition room with a small indoor garden designed by the architect Tadao Andō.



If time permits, move on to the **George Nakashima Memorial Gallery**: A Japanese–American woodworker born 1905 in Spokane, Washington (USA), George Nakashima was a leader and innovator in 20<sup>th</sup> century's wooden furniture design. After travelling the world, he lived both in Japan and USA. Among many awards Nakashima received the Third Order of the Sacred Treasure from the Emperor and Government of Japan in 1983. Sakura Seisaksho, who worked actively with Nakashima since 1964, constructed this Memorial Gallery in 2008 to promote his lifestyle and philosophy. Besides the studio in New Hope, USA, this memorial gallery is the best place in the world to appreciate his works.



After Takamatsu tour, take ferry from **Takamatsu Port** to transfer to Naoshima island.

**[Suggested Schedule]**

**Ferry / Takamatsu 15:35 – 16:25 Miyanoura (Non Reserved)**



Upon arrival at Naoshima island, you will continue to be transferred to Benesse House by Private Chartered Vehicle.

**Benesse House**

Once a sleepy island of fishing villages, Naoshima emerged from anonymity in 1992, when the Benesse Group chose it to establish a museum of contemporary art doubling as a hotel. Since then, the project has been enlarged and the island has become very fashionable. **Benesse House** is a highly original complex designed by Tadao Andō incorporating a museum and a hotel, based on the concept of coexistence between nature, architecture, and art. The hotel comprises four buildings: The Museum, Oval, Park, and Beach.



**Overnight at Benesse House**

## Day – 7, Naoshima

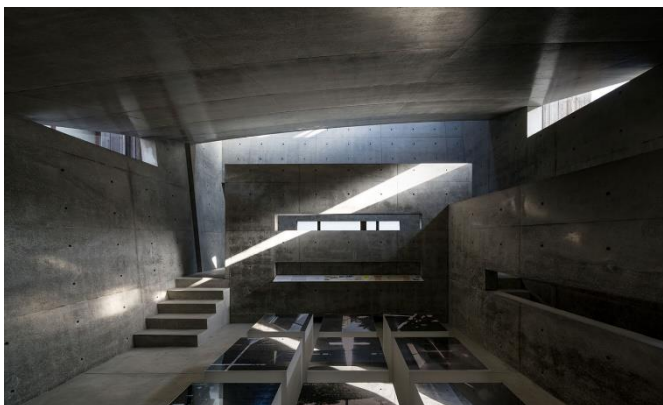
At 10:00, meet your **English Speaking Guide** in the hotel lobby and explore Naoshima Island with your guide by Chartered Vehicle.

First of all, visit **Chichu Museum** which was constructed in 2004 as a site rethinking the relationship between nature and people. The museum was built mostly underground to avoid affecting the beautiful natural scenery of the Seto Inland sea. Artworks by Claude Monet, James Turrell, and Walter De Maria are on permanent display in this building designed by Tadao Ando.



Move on to **Lee Ufan Museum** – A museum resulting from the collaboration between internationally acclaimed artist Lee Ufan, presently based mainly in Europe, and architect Tadao Ando. The Ando-designed semi-underground structure houses paintings and sculptures by Lee spanning a period from the 1970s to the present day.

Continue to **ANDO MUSEUM** – A Tadao Ando-designed inner space, framed by unadorned concrete walls, infuses new life in this about 100-year-old traditional wooden house in Honmura. Here, contrasting elements of past/present, wood/concrete, light/shadow overlap in this space which condenses the essence of Tadao Ando's architecture.





Then, visit at **Art House Project** which is an art project underway in Naoshima's Honmura district. It began in 1998 with Kadoya, and currently comprises seven locations: *Kadoya*, *Minamidera*, *Kinza*, *Go'o Shrine*, *Ishibashi*, *Gokaisho*, and *Haisha*. *Minamidera* is a new building, and it was designed by Tadao Ando to accommodate the size of the works of James Turrell. The vicinity was once home to five temples and shrines, as well as the ruins of a castle, making it the center of history and culture in Naoshima.



Come back to the hotel by 17:00.

**Overnight at Benesse House**

### Day – 8, Move to Kyoto

At 9:15, check out Benesse House, meet your **English Speaking Guide** in the lobby and transfer to **Miyanoura Port** by Private Chartered Car. Take a ferry to Uno port.

#### **[Suggested Schedule]**

**Ferry / Miyanoura 9:52 – 10:12 Uno (Non Reserved)**

Upon arrival at Uno Port, you will continue to be transferred to **Nariwa Museum** in Takahashi city. It's an art museum designed by Tadao Ando in 1994, the museum features his distinct style of utilizing unvarnished concrete combined with sharp lines. The main exhibition at Nariwa Museum displays paintings by Nariwa-born Kojima Torajiro, an artist who painted in the Western style, as well as ancient Egyptian items from his private collection.



After the visit, transfer back to Okayama city and before taking train to Kyoto, stop by **Okayama Shinkin Bank Uchisange Square** which is also designed by Tadao Ando.



Then, transfer to **Okayama Station** and take bullet train for Kyoto.



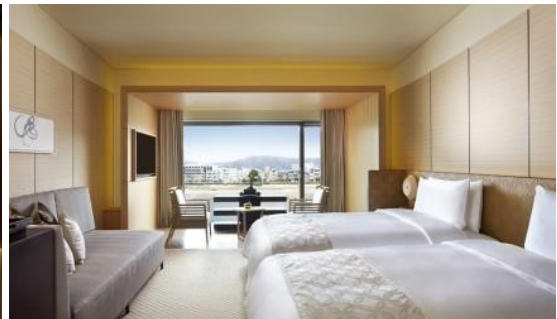
**[Suggested Schedule]**

**Bullet Train Nozomi #40 / Okayama 16:37 – 17:38 Kyoto**



Upon arrival at **Kyoto Station**, you will meet your **English Speaking Chauffeur** and transfer by Private Chartered Car to the hotel.

**The Ritz–Carlton, Kyoto**



The Ritz–Carlton, Kyoto sits serenely on the banks of the Kamogawa river, in a prime location with expansive views of the famous Higashiyama Sanju–Roppo (36–mountain range). The hotel is also close to Kyoto’s famous downtown districts such as Gion, Kawaramachi and Pontocho streets, convenient locations for both sightseeing and business. Here, you can experience quality time that is only available in the world’s finest hotels, in a luxurious space that is steeped in the ancient traditions and culture of Kyoto.

**Overnight at The Ritz–Carlton, Kyoto**

## Day – 9, Kyoto

At **9:00**, meet **English Speaking Guide** in the lobby and start your Kyoto excursion by Private Chartered Car.

Today, start from **Kiyomizu-dera Temple** where you can also see the city of Kyoto. With its magnificent views of the city from its main hall attracting visitors throughout Japan, Kiyomizu-dera Temple was originally founded in 798. The common Japanese idiom “jumping from the veranda of Kiyomizu Temple” means that they are about to undertake some particularly bold or daring adventure.



**Yasakajinja Shrine** is one of Kyoto's most famous shrine, particularly for travelers and funds the annual Gion Matsuri Festival. Enter the peaceful grounds and witness the multiple offerings made by local people & businesses. The Shrine is also very pretty at night, when its numerous lanterns are lit.

Then, visit **Garden of Fine Art** – a plaza with walls of cascading water, designed by Ando Tadao in his familiar style of smooth concrete. It has been built below ground level to keep it from obscuring the adjacent Botanical Garden. One could compare this space to a modernist stroll garden, but instead of rocks and plantings one finds eight works of art here.



Transfer to **Nijojo Castle**. Particularly interesting are its Momoyama architecture, decorated sliding doors, and wooden floors that squeak like nightingales when someone walks on them – a revolutionary security measure of those days against intruders.



Lastly, stop by **The Times building** and **NIWAKA Fine Jewelry building** – both are designed by Tadao Ando.



Come back to the hotel by 17:00.

Overnight at The Ritz-Carlton, Kyoto



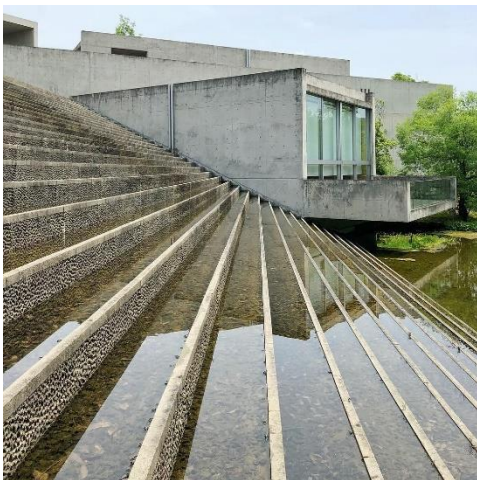
**Day – 10, Kyoto – Day Trip to Kumihama & Ayabe**

At 9:00, meet **English Speaking Guide** in the lobby and leave for excursion by Private Car.

First, transfer to **Wakuden No Mori** in Kumihama (it takes about 2.5h with normal traffic condition). This facility features the **Mitsumasa Anno Art Museum**, a world-known artist and was designed by Tadao Ando. About 30,000 trees were planted on site in order to appreciate the blessings of nature and protect the global environment.



After this, you will move to **The Ayabe Community Center**. The building was completed in 1995, the same year Ando won the Pritzker Award. It showcases the clean lines, use of asymmetry, and contrast between light and darkness. The interior is naturally cool, even during the summer. The southeastern side of the building has floor-to-ceiling windows reminiscent of contemporary museum spaces such as the Mori Museum in Tokyo or the Louisiana Museum in Denmark.



Transfer back to Kyoto city, if time permits continue your stroll to reaching the **Geisha district of Gion**, famed for the preservation of its traditional architecture and traditional entertainment presented by graceful “Geiko,” which literally means “women of art.” During its golden age in the first half of 19th century, more than 3000 Geikos worked in some 700 teahouses in Gion.



Come back to the hotel by 17:00.

Overnight at The Ritz–Carlton, Kyoto



## Day - 11, Move to Osaka

At **9:00**, leave for Osaka by Private Vehicle with your **English Speaking Guide**.

On the way to Osaka, stop by **Asahi Beer Oyamazaki Villa Museum of Art**, which consists of the main building, built between the 1910s to early 1930s, and two annexes—the Underground Jewelry Box (South Wing) and the Dream Box (North Wing) designed by architect Tadao Ando.

The main building contains ceramics by Kanjiro Kawai and Bernard Leach as well as craftwork which were born from the Japanese Mingei (folk crafts) Movement. Works by **Claude Monet**, including the Water Lilies series, are on exhibit in the Underground Jewelry Box. This is a museum where visitors can enjoy invaluable architecture, an exquisite garden and beautiful works on exhibit.



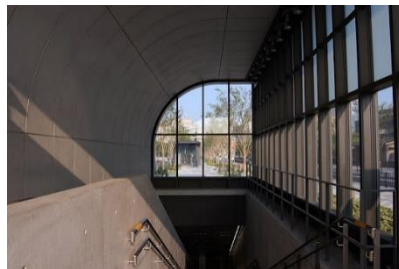
Move on to Osaka, and visit at **Shiba Ryotaro Memorial Museum Memorial** opened in 2001 to convey the spirit of the writer Shiba Ryotaro who sent a lot of his work to the world such as "Gaido wo yuku" and "Komyo ga tsuji" and died suddenly in 1996. The site is about 2,600 square meters and located adjacent to Shiba's home and a memorial of Tadao Ando design.



Transfer to **Nakanoshima Children's Book Forest**, designed specifically for children. The space is filled, wall-to-wall, floor-to-ceiling, with outward-facing books. The building was designed and built by architect Tadao Ando, who then donated it to the city to be utilized by children of all ages. (need to make reservation in advance)

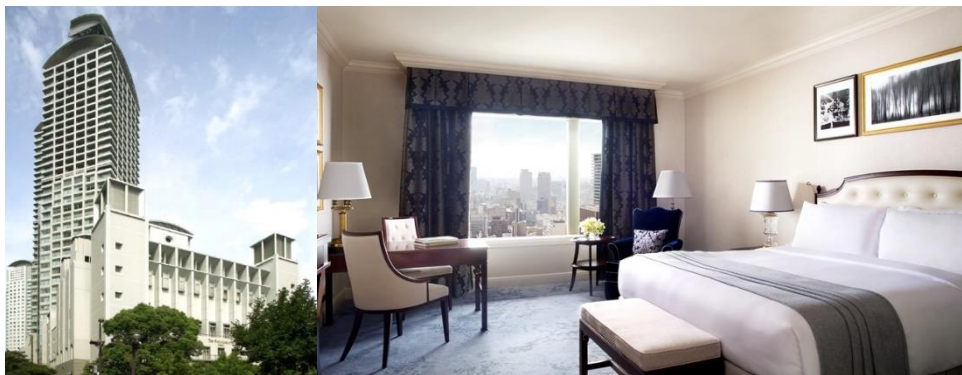


Before heading to the hotel, you will visit some buildings designed by Tadao Ando, such as **Shinsakuramiya Bridge**, **Naniwabashi Station** and **Chaska Chayamachi / Harmonie Embrasse** Osaka.



Transfer to the hotel and check-in by 17:00.

### The Ritz-Carlton, Osaka



Overnight at The Ritz-Carlton, Osaka



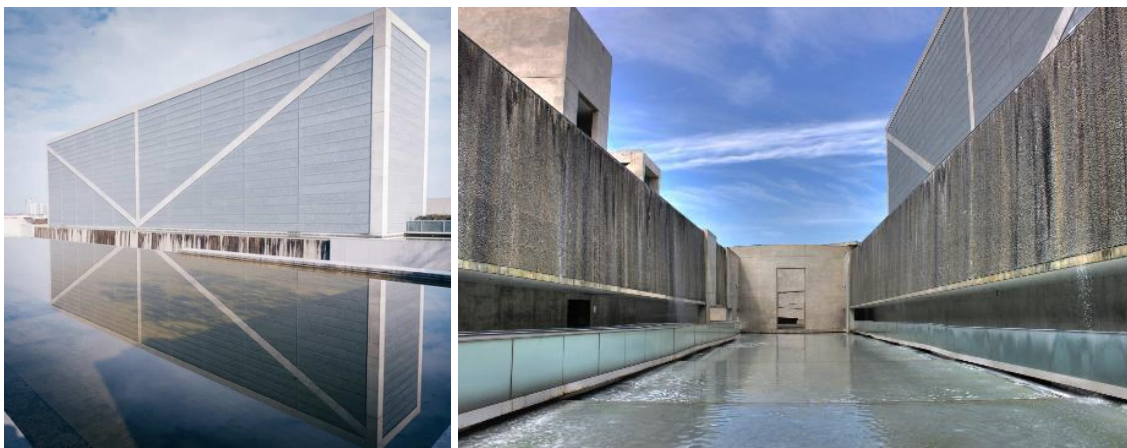
## Day – 12, Osaka

At 9:00, meet **English Speaking Guide** in the lobby and leave for Osaka excursion by Private Chartered Car.

Firstly, transfer to **Chikatsuasuka Museum** designed by architect Tadao Ando. This is a museum for exhibiting and studying the ***Kofun culture*** that existed during Japan's early history. It is designed to provide a full view of the Chikatsu Asuka Fudoki-No-Oka and various archaeological findings are exhibited in a space resembling the inside of a kofun.



Move on to **Osaka Prefectural Sayamaike Museum**. The museum is dedicated to the relics and techniques of ancient Japanese water engineering along with the history of the community, through conservation of the bank strata and exhibition of various historical items excavated from the pond. The novel and creative design of the building was created by Tadao Ando.



Continue your tour to **Osaka Culturarium at Tempozan (previously The Suntory Museum)** which is one of Tadao Ando's most successful expressions of his favourite theme: the relationship between man, water and architecture. The cultural complex commissioned by Suntory, a Japanese liquor manufacturer, incorporates a gallery of art and design, a 3D IMAX cinema, a series of shops and a restaurant.



Before heading back to the hotel, look at **Universal–City Station**, also designed by Tadao Ando.

Come back to the hotel by 17:00.

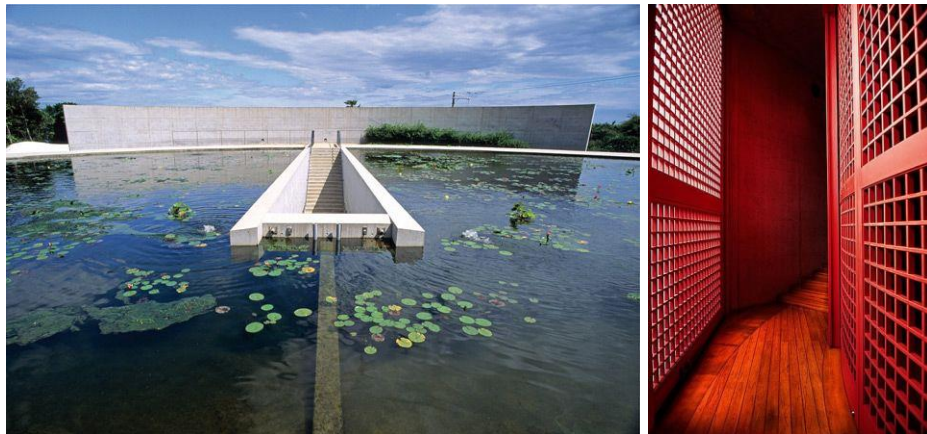
**Overnight at The Ritz–Carlton, Osaka**



### Day – 13, Osaka – Day Trip to Awajishima & Kobe

At **9:00**, meet with your **English Speaking Guide** and leave for Day Trip to Awajishima island & Kobe by chartered car.

First of all, transfer to Awajishima island and visit **Water Temple**. On a hill near the coast in Higashiura, this is a modern temple designed by Tadao Ando. The temple is built of concrete and underground, with a circular pool of water (hence the name) above the prayer space.

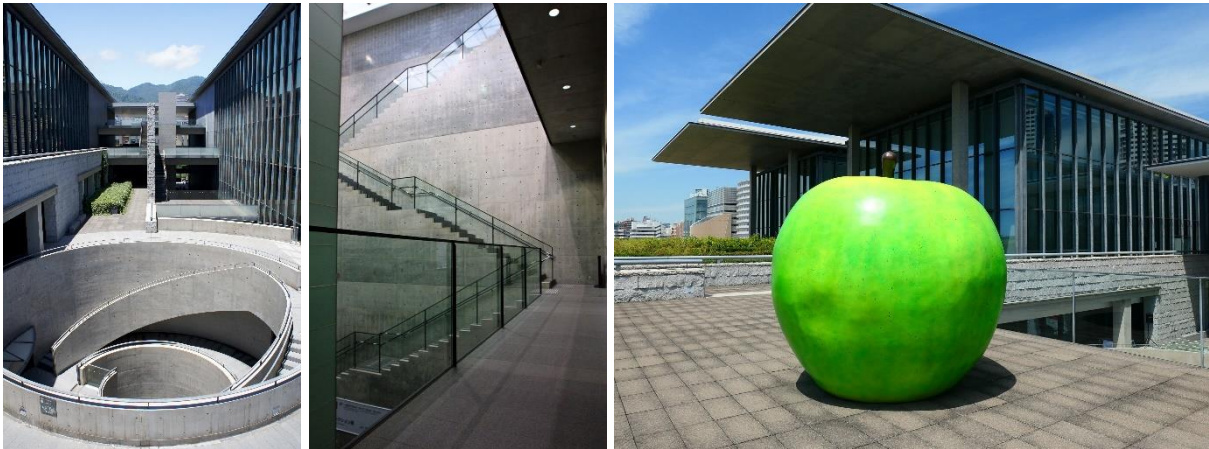


Move on to **The Awaji Yumebutai** which is a complex of conference center, hotel and memorial in Awaji, Hyōgo, built near the epicenter of the 1995 Great Hanshin Awaji earthquake. It was designed by Tadao Ando, who had begun planning for the project (as a park) prior to the earthquake. The hotel is operated as the Westin Awaji Island Resort.





Then, transfer to Kobe city and visit **Hyogo Prefectural Museum of Art**. Designed by Tadao Ando, this museum itself is an attraction with many points to see. The museum, designed not only for the display of artworks but for the integration of various types of art, achieves a complex and diverse spatial experience with a plain and simple structure. Ando Gallery opened in 2019 and provides visitors an up-close look at this artists' one-of-a-kind pieces.



Lastly, stop by **Nishinomiya City Shellfish Museum**. The building, designed by architect Tadao Ando, fashioned the exterior to resemble the sail of a yacht. It has a collection of 5000 shell specimens from 2000 species.



Come back to the hotel by 17:00.

**Overnight at The Ritz-Carlton, Osaka**

**Day - 14, Osaka - Kansai International Airport**

After checking out the hotel, meet with **English Speaking Chauffeur** in the hotel lobby to transfer to **Kansai International Airport** by chartered car. Check in at the counter by yourself to board your international flight. Have a safe flight!



**\*\*\* END OF YOUR JAPAN JOURNEY \*\*\***